



Digital thermometer ·

Circuiti Neo

**EN** Instruction manual



# Contents

<b>1</b>	<b>Imprint (German) .....</b>	<b>4</b>
<b>2</b>	<b>About this Instruction Manual.....</b>	<b>5</b>
<b>3</b>	<b>General safety instructions .....</b>	<b>5</b>
<b>4</b>	<b>Parts overview and scope of delivery .....</b>	<b>8</b>
<b>5</b>	<b>Screen display .....</b>	<b>9</b>
<b>6</b>	<b>Setting up power supply .....</b>	<b>9</b>
<b>7</b>	<b>Automatic measurement display .....</b>	<b>10</b>
<b>8</b>	<b>Trend arrow indicators.....</b>	<b>10</b>
<b>9</b>	<b>Display change .....</b>	<b>10</b>
<b>10</b>	<b>Disposal .....</b>	<b>11</b>
<b>11</b>	<b>EC Declaration of Conformity .....</b>	<b>11</b>
<b>12</b>	<b>Warranty.....</b>	<b>12</b>

---

# 1 Imprint (German)

Bresser GmbH

Gutenbergstr. 2  
46414 Rhede  
Germany

<http://www.bresser.de>

For any warranty claims or service enquiries, please refer to the information on "Warranty" and "Service" in this documentation. We apologize for any inconvenience caused by the fact that we cannot process enquiries or submissions sent directly to the manufacturer's address.

Errors and technical changes excepted.

© 2019 Bresser GmbH

All rights reserved.

The reproduction of this documentation - even in extracts - in any form (e.g. photocopy, print, etc.) as well as the use and distribution by means of electronic systems (e.g. image file, website, etc.) without the prior written permission of the manufacturer is prohibited.

The designations and brand names of the respective companies used in this documentation are generally protected by trade, trademark and/or patent law in Germany, the European Union and/or other countries.

---

## 2 About this Instruction Manual

---



### NOTICE

**These operating instructions are to be considered a component of the device.**

Read the safety instructions and the operating manual carefully before using this device.

Keep this manual in a safe place for future reference. When the device is sold or given to someone else, the instruction manual must be provided to the new owner/user of the product.

---

## 3 General safety instructions

---



### DANGER

#### **Danger of suffocation!**

Improper use of this product may result in suffocation, especially for children. It is therefore imperative that you observe the following safety information.

---

- Keep packaging materials (plastic bags, rubber bands, etc.) away from children! There is a DANGER OF CHOKING [These pose a CHOKING HAZZARD]
- This product contains small parts that can be swallowed by children! There is a DANGER OF CHOKING [These pose a CHOKING HAZZARD]



## **DANGER**

### **Risk of electric shock**

This device has electronic parts operated via a power source (power supply and/or batteries). Improper use of this product can cause an electric shock. An electric shock can cause serious or potentially fatal injuries. The following safety information must be observed at all times.

- Children must only use the device under adult supervision! Only use the device as described in the manual; otherwise, you run the risk of an electric shock.



## **DANGER**

### **Risk of explosion**

Improper use of this product can cause an explosion. The following safety information must be observed at all times to prevent an explosion.

- Do not expose the device to high temperatures. Use only the recommended batteries. Do not short-circuit the device or batteries, or throw them into a fire! Excessive heat or improper handling could trigger a short-circuit, a fire or an explosion!



## **NOTICE**

### **DANGER of material damage!**

Improper handling may result in damage to the unit and/or accessories. Therefore, use the device only in accordance with the following safety information.

- Never disassemble the device. In the event of a fault, please contact your specialist retailer. The specialist retailer will contact the service centre and send the device for repair if necessary.

- Do not immerse the unit in water!
- Do not expose the device to impacts, vibrations, dust, constant high temperatures or excessive humidity. This can result in malfunctions, short-circuits or damage to the batteries and components.
- Use only the recommended batteries. Always replace weak or empty batteries with a new, complete set of batteries at full capacity. Do not use batteries from different brands or with different capacities. Remove the batteries from the unit if it has not been used for a long time.
- Never use rechargeable batteries.



## NOTICE

### **Risk of voltage damage!**

The manufacturer is not liable for damage related to improperly installed batteries!

Bresser GmbH

Gutenbergstr. 2

46414 Rhede

Germany

<http://www.bresser.de>

For any warranty claims or service enquiries, please refer to the information on "Warranty" and "Service" in this documentation. We apologize for any inconvenience caused by the fact that we cannot process enquiries or submissions sent directly to the manufacturer's address.

Errors and technical changes excepted.

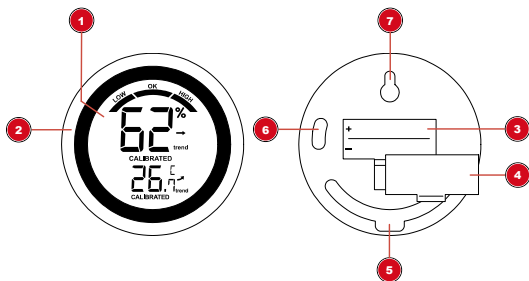
© 2019 Bresser GmbH

All rights reserved.

The reproduction of this documentation - even in extracts - in any form (e.g. photocopy, print, etc.) as well as the use and distribution by means of electronic systems (e.g. image file, website, etc.) without the prior written permission of the manufacturer is prohibited.

The designations and brand names of the respective companies used in this documentation are generally protected by trade, trademark and/or patent law in Germany, the European Union and/or other countries.

## 4 Parts overview and scope of delivery

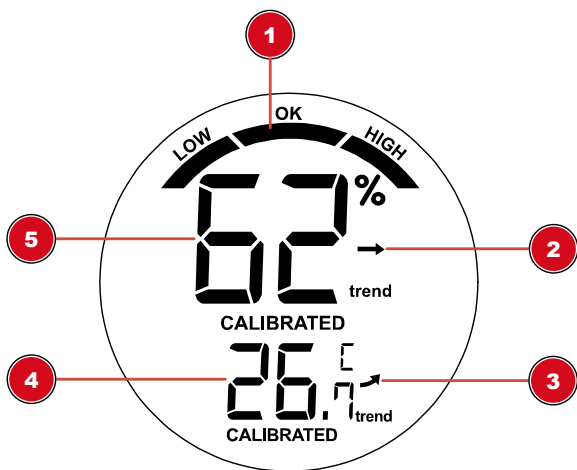


*Illustration 1: All parts of the digital thermometer*

1	Display	2	Housing
3	Battery compartment	4	Battery door
5	Stand, fold-out	6	°C/°F button (display change between °C and °F)
7	Wall mount fixture		



## 5 Screen display



*Illustration 2:* Screen display of the digital thermometer

1	Climate indicator	2	Humidity trend
3	Temperature trend	4	Indoor temperature (in °C or °F)
5	Humidity		

## 6 Setting up power supply

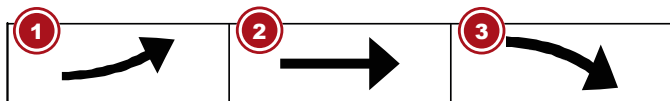
1. Remove the battery compartment cover.

2. Insert battery(ies) into the battery compartment. Ensure that the battery polarity (+/-) is correct.
3. Replace the battery compartment cover.

## 7 Automatic measurement display

Once the power is established, the readings for the current environment are displayed on the unit.

## 8 Trend arrow indicators



1 Rising

2 Steady

3 Falling

The temperature and humidity trend indicator shows the trends of changes in the forthcoming few minutes. Arrows indicate a rising, steady or falling trend.

## 9 Display change

In normal display mode, press the C/F button to toggle between °C and °F when displaying the temperature unit.

## 10 Disposal



Dispose of the packaging materials properly, according to their type, such as paper or cardboard. Contact your local waste-disposal service or environmental authority for information on the proper disposal.



Do not dispose of electronic devices in the household garbage!

As per Directive 2012/19/EC of the European Parliament on waste electrical and electronic equipment and its adaptation into German law, used electronic devices must be collected separately and recycled in an environmentally friendly manner.



Do not dispose of batteries and rechargeable batteries with the household waste. You are legally required to return used batteries and rechargeable batteries. After they are used, the batteries can be returned free of charge to our point of sale or to a nearby location (for example, retailers or municipal collecting points).

Batteries and rechargeable batteries are marked with a symbol of a crossed-out dustbin and the chemical symbol of the pollutant. "Cd" stands for Cadmium, "Hg" stands for mercury and "Pb" stands for lead.



Cd<sup>1</sup>



Hg<sup>2</sup>



Pb<sup>3</sup>

## 11 EC Declaration of Conformity



Bresser GmbH has issued a "Declaration of Conformity" in accordance with applicable guidelines and corresponding standards. The full text of the EU de-

---

claration of conformity is available at the following internet address: [www.bresser.de/download/7000006/CE/7000006\\_CE.pdf](http://www.bresser.de/download/7000006/CE/7000006_CE.pdf)

## 12 Warranty

The regular guarantee period is 2 years and begins on the day of purchase. To benefit from an extended voluntary guarantee period as stated on the gift box, registration on our website is required.

You can consult the full guarantee terms as well as information on extending the guarantee period and details of our services at **[www.bresser.de/warranty\\_terms](http://www.bresser.de/warranty_terms)**.







# Service

## DE AT CH BE

Bei Fragen zum Produkt und eventuellen Reklamationen nehmen Sie bitte zunächst mit dem Service-Center Kontakt auf, vorzugsweise per E-Mail.

**E-Mail:** [service@bresser.de](mailto:service@bresser.de)  
**Telefon\*:** +49 28 72 80 74 210

BRESSER GmbH  
Kundenservice  
Gutenbergstr. 2  
46414 Rhede  
Deutschland

\*Lokale Rufnummer in Deutschland (Die Höhe der Gebühren je Telefonat ist abhängig vom Tarif Ihres Telefonanbieters); Anrufe aus dem Ausland sind mit höheren Kosten verbunden.

## GB IE

Please contact the service centre first for any questions regarding the product or claims, preferably by e-mail.

**e-mail:** [service@bresseruk.com](mailto:service@bresseruk.com)  
**Telephone\*:** +44 1342 837 098

BRESSER UK Ltd  
Suite G3, Eden House  
Enterprise Way  
Edenbridge, Kent TN8 6HF  
United Kingdom

\*Number charged at local rates in the UK (the amount you will be charged per phone call will depend on the tariff of your phone provider); calls from abroad will involve higher costs.

## FR BE

Si vous avez des questions concernant ce produit ou en cas de réclamations, veuillez prendre contact avec notre centre de services (de préférence via e-mail).

**e-mail:** [sav@bresser.fr](mailto:sav@bresser.fr)  
**Téléphone\*:** 00 800 6343 7000

BRESSER France SARL  
Pôle d'Activités de Nicopolis  
260, rue des Romarins  
83170 Brignoles  
France

\*Prix d'un appel local depuis la France ou Belgique

## NL BE

Als u met betrekking tot het product vragen of eventuele klachten heeft kunt u contact opnemen met het service centrum (bij voorkeur per e-mail).

**e-mail:** [info@folux.nl](mailto:info@folux.nl)  
**Téléfono\*:** +31 528 23 24 76

Folux B.V.  
Smirnofstraat 8  
7903 AX Hoogeveen  
Nederlands

\*Het telefoonnummer wordt in het Nederland tegen lokaal tarief in rekening gebracht. Het bedrag dat u per gesprek in rekening gebracht zal worden, is afhankelijk van het tarief van uw telefoon provider; gesprekken vanuit het buitenland zullen hogere kosten met zich meebrengen.

## ES PT

Si desea formular alguna pregunta sobre el producto o alguna eventual reclamación, le rogamos que se ponga en contacto con el centro de servicio técnico (de preferencia por e-mail).

**e-mail:** [servicio.iberia@bresser-iberia.es](mailto:servicio.iberia@bresser-iberia.es)  
**es**  
**Téléfono\*:** +34 91 67972 69

BRESSER Iberia SLU  
c/Valdemorillo, 1 Nave B  
P.I. Ventorro del cano  
28925 Alcorcón Madrid  
España

\*Número local de España (el importe de cada llamada telefónica dependen de las tarifas de los distribuidores); Las llamadas des del extranjero están ligadas a costes suplementarios.